

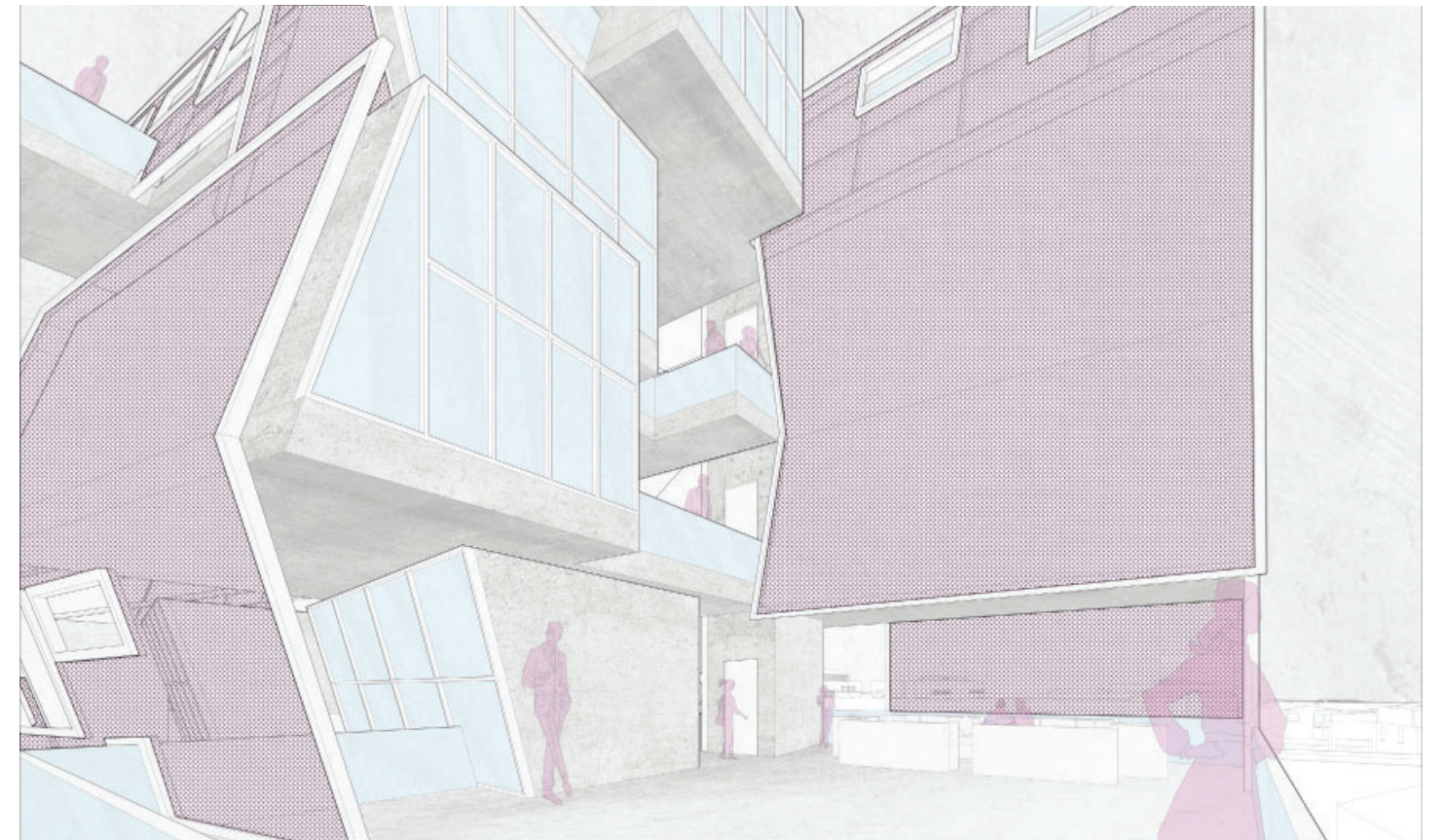
0

BRIAN W. KIM
WORK SAMPLE

1. CO-HOUSING + HQ
2. ART+CULTURE OFFICE
3. MONOLITH MUSEUM
4. SHARE THE ROAD!

1

Inspired by Metabolism, the apartment's "modular" units are varied through simple transformations and stacked to create textured elevations that dictate the spatial experience. Concerns of privacy, natural lighting, and more are addressed through the modulating and stacking of units.

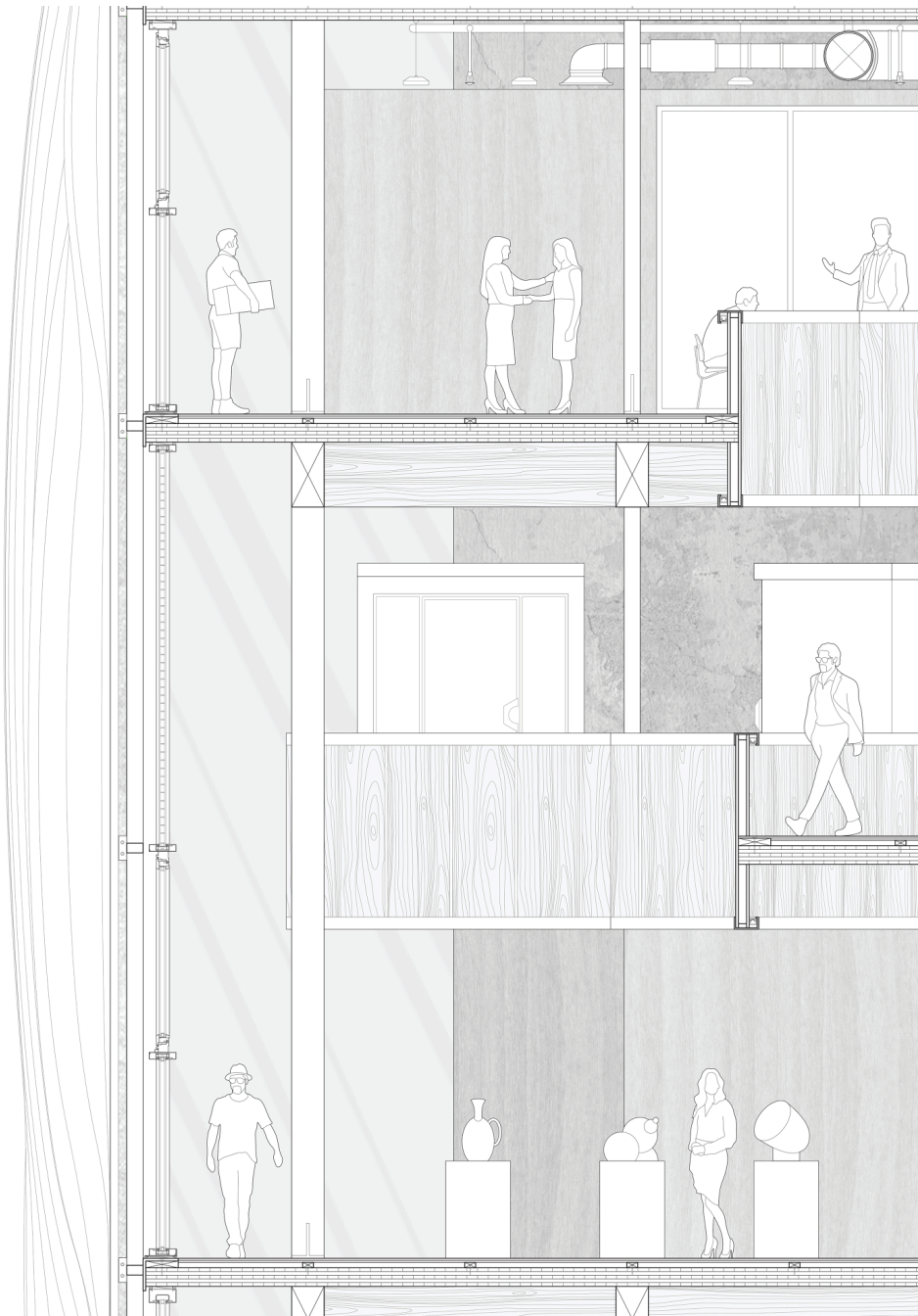
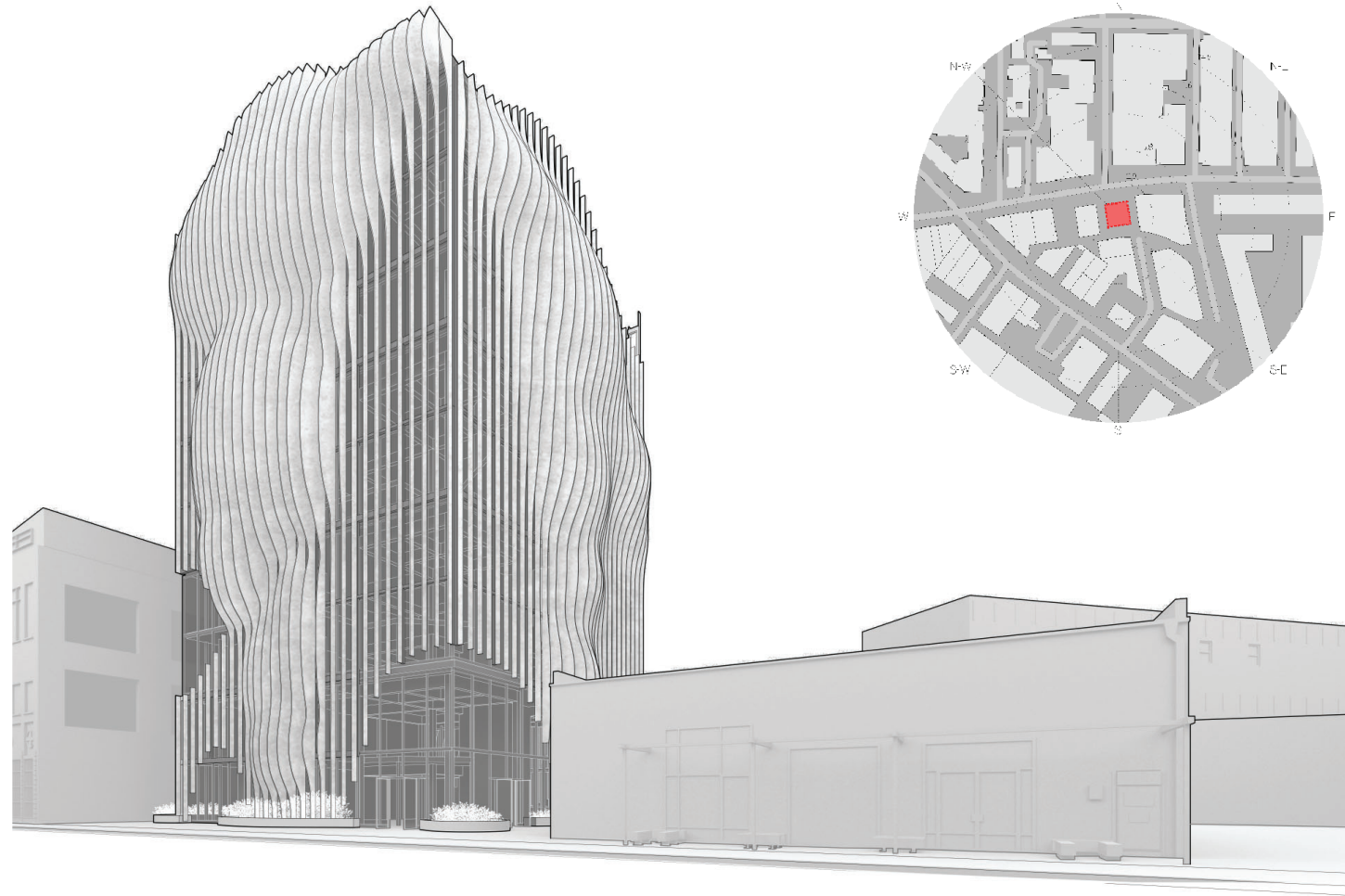


CO-HOUSING + HQ

LOS ANGELES, CA

2

A heavy timber office building drawing inspiration from phyllotaxy, the natural leaf growth on plants, to maximize natural light between floors. The facade of fins alleviates harsh lighting and provides softer, reflected light into the open office spaces.

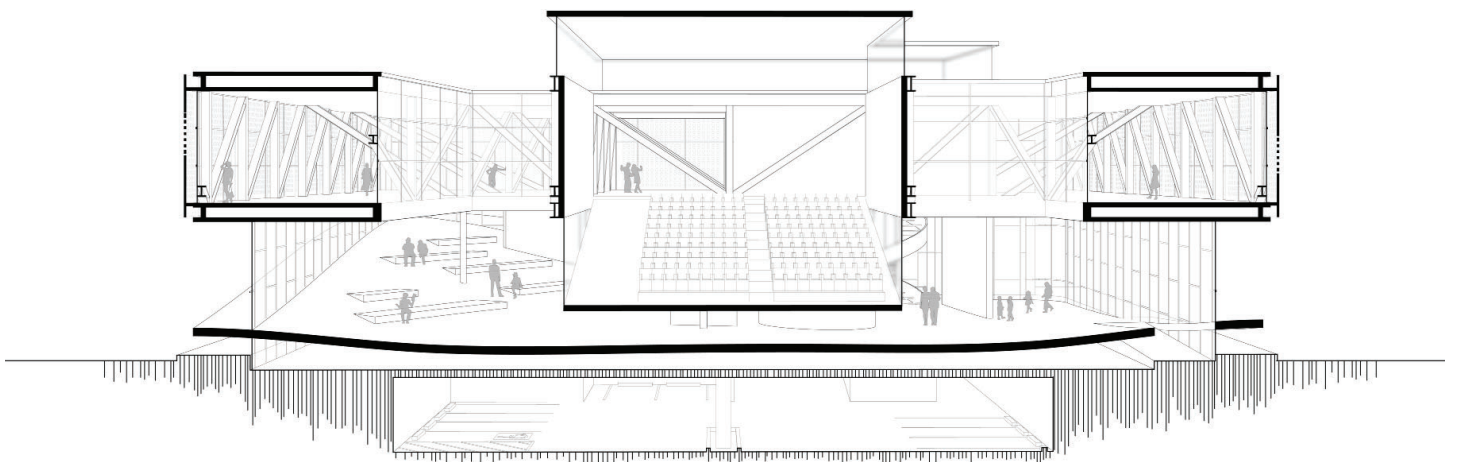
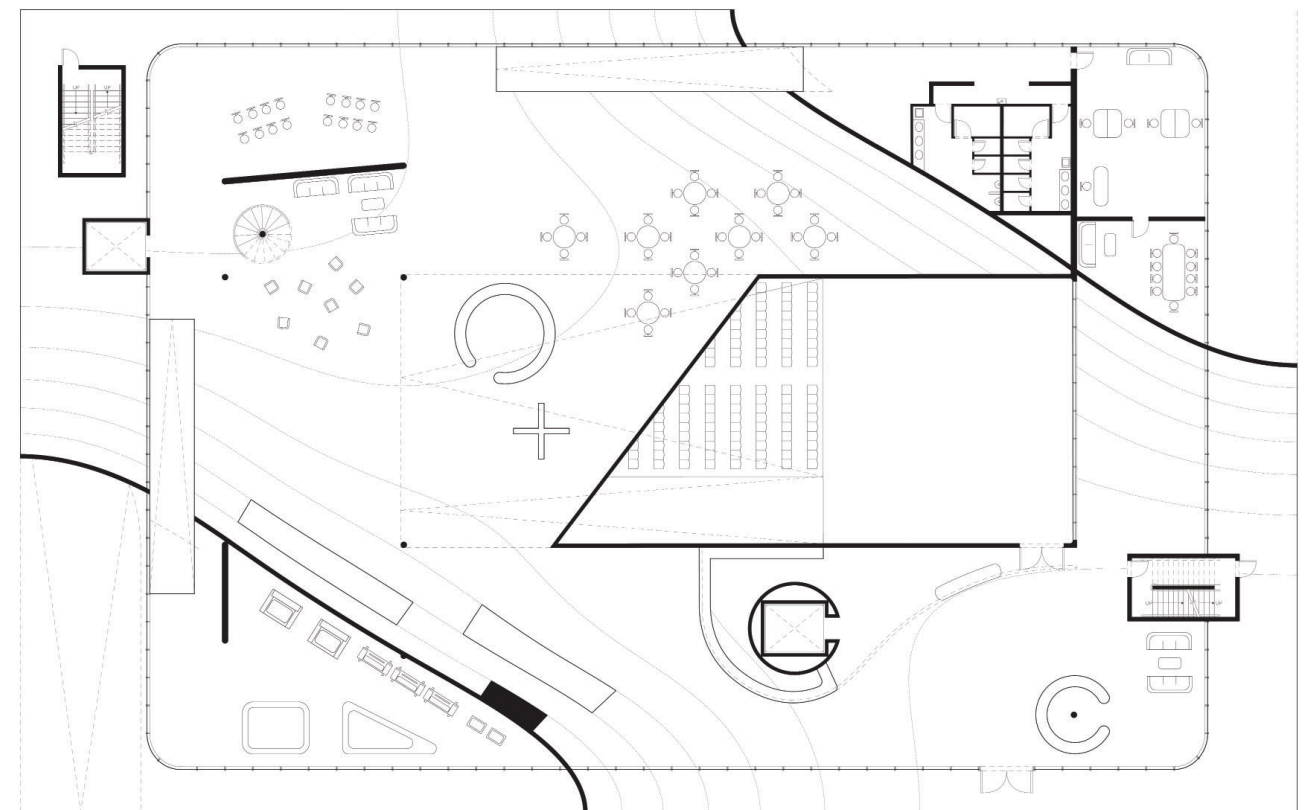
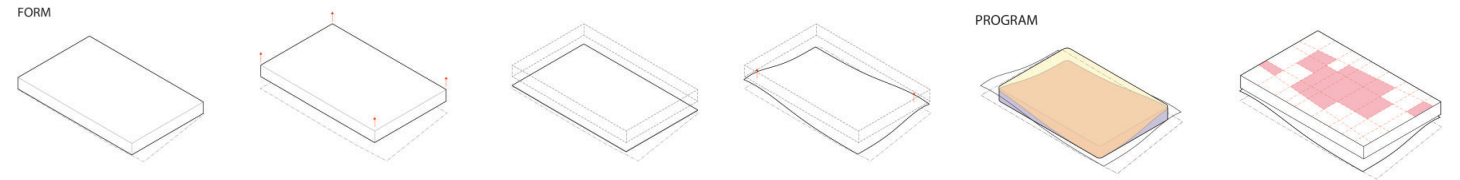
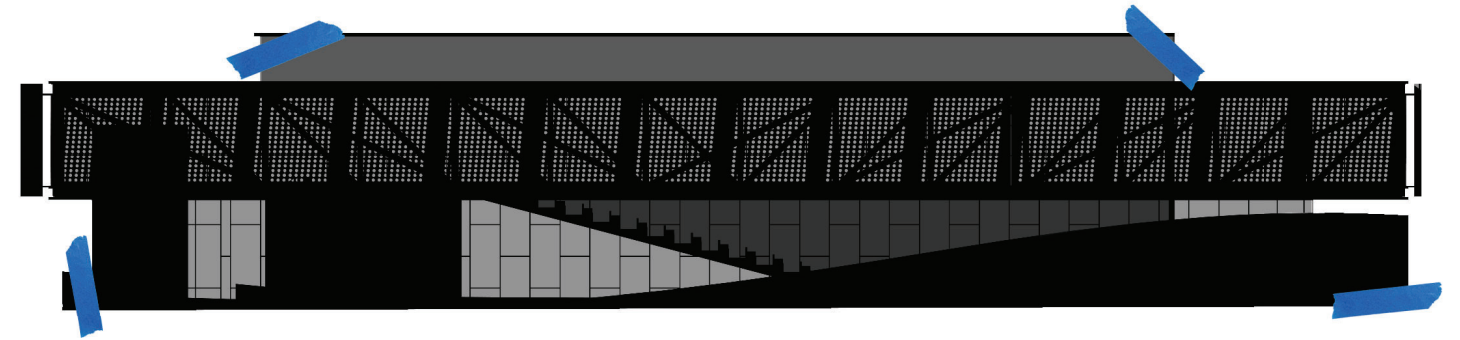
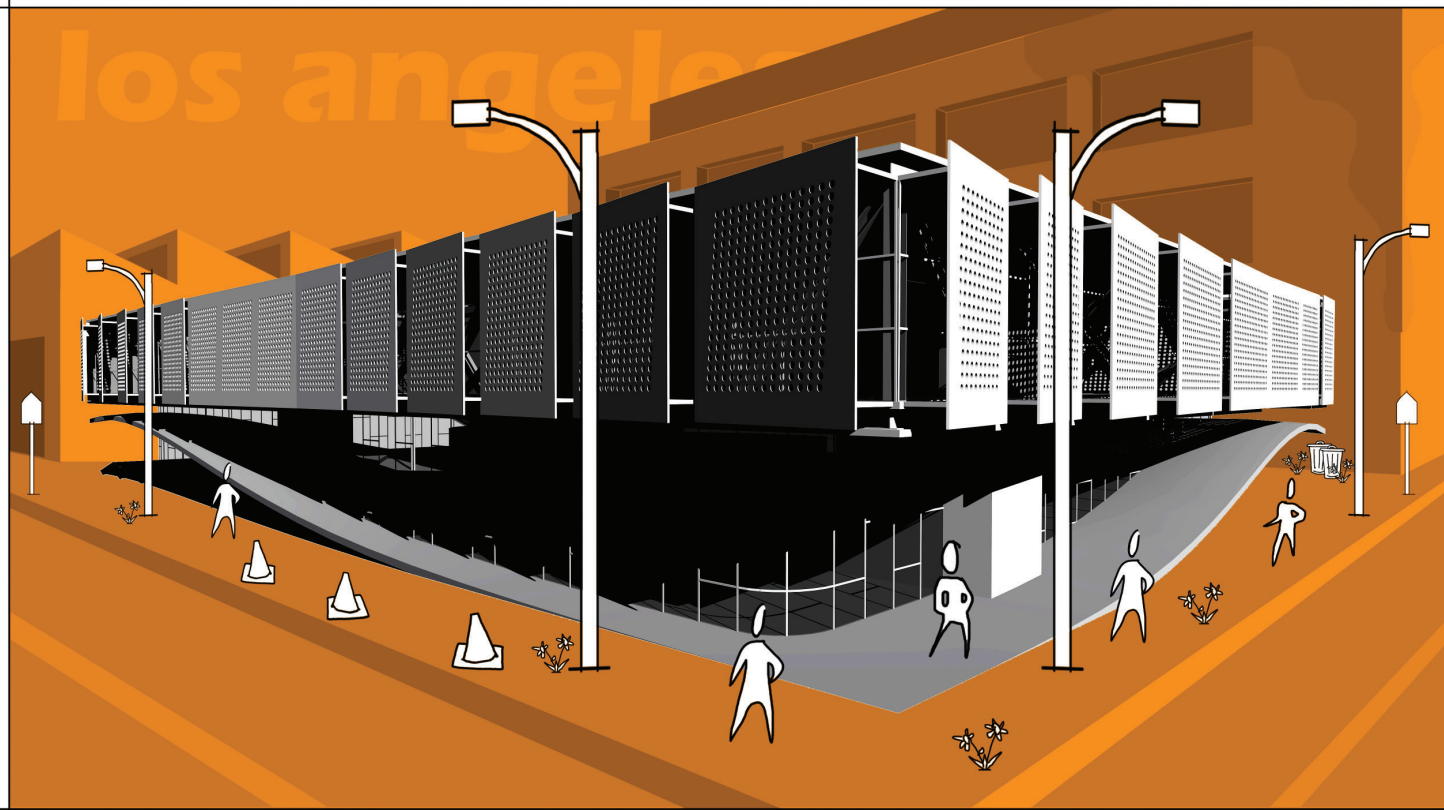


ART+CULTURE OFFICE

LOS ANGELES, CA

3

Designed as a monolith resting upon a landscape, this museum performs as an everchanging exhibition through the use of Cor-Ten Steel - temporal art resting upon a pedestal. The free-flowing landscape extends the public sphere while the rigid monolith provides secure housing for architectural exhibitions.



MONOLITH MUSEUM

LOS ANGELES, CA

4

Urban exploration in Kuala Lumpur's Brickfields neighborhood uncovered Jalan Padang Belia, a street that was aggressively reprogrammed by its residents. Traditional shophouses on one sidewalk, permanent shed restaurants on the other, the street forces vehicles and pedestrians to commute the same path as traditionally indoor programs seize sidewalks and spill out onto the road.



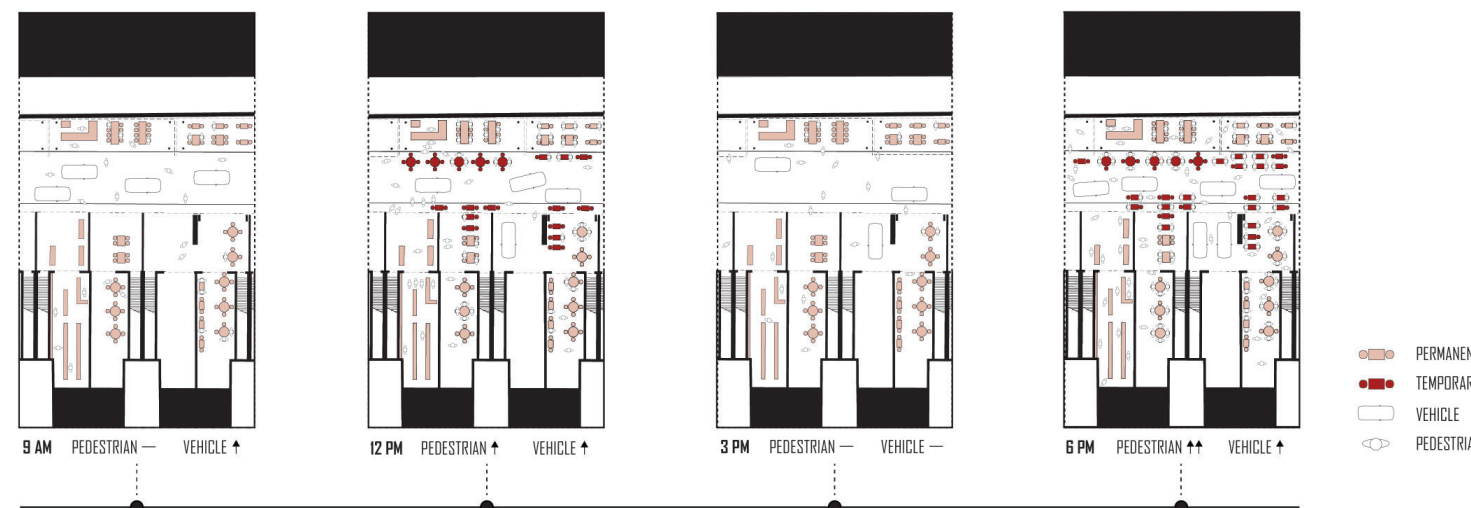
stored



initiated



utilized



SHARE THE ROAD!

JALAN PADANG BELIA, KUALA LUMPUR